



Powerful Solutions

EagleVision CCTV

SECURITY SOLUTIONS AND TECHNOLOGIES

Câmera Subaquática até 3Km profundidade - Aço Inox - Analógica ou IP

Codificador embutido, decodificador externo, para integrar o cabo e conexão de dados/energia;

Fabricado em aço inox 316L (Aluminio opcional);

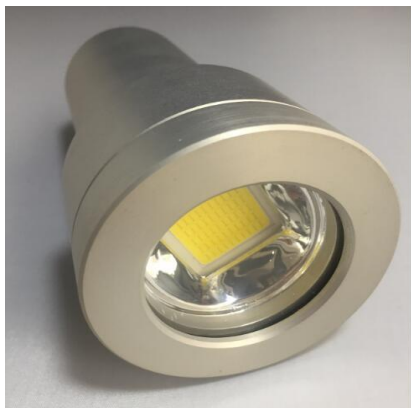
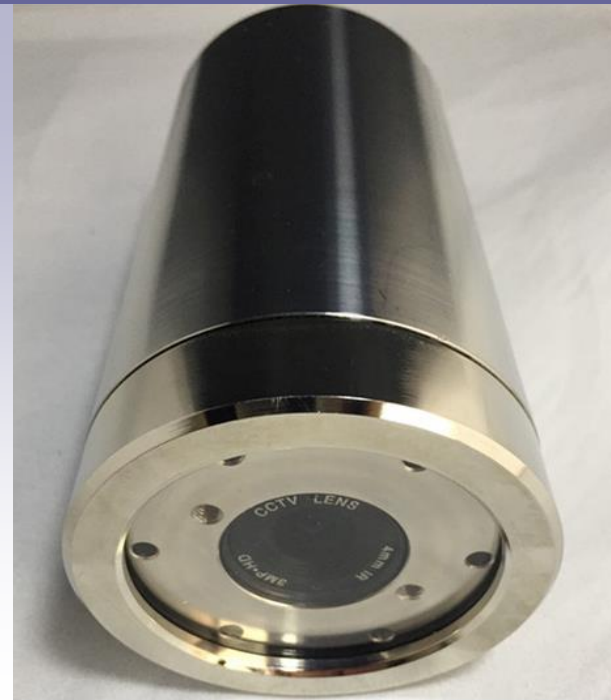
Versão personalizada do conector estanque vedado unidirecional;

Suporta pressão de até 3000 metros;

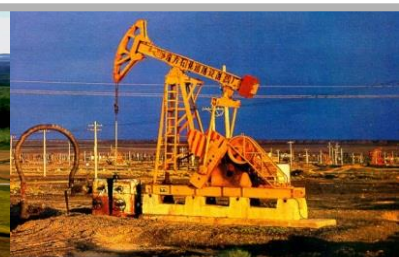
Possui iluminador infra-vermelho integrado;

Conector especial subaquático MCBH2MSS

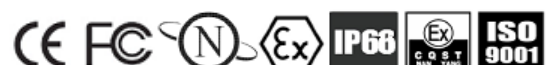
Modelos disponíveis possuem Câmera integrada com Sensor Analógico HD-CVI/TVI/AHD de 2MP ou Sensor Digital IP de 2MP ou 4K com lente fixa de 3.6mm, 4.0mm, 6.0mm ou 8.0mm.



Spotlight Opcional



Avenida do Batel, 1230 • 5° andar
Batel • Curitiba • PR • 80420-090
Tel: (041) 3342 1600 • vendas@eaglevision.com.br
www.eaglevision.com.br

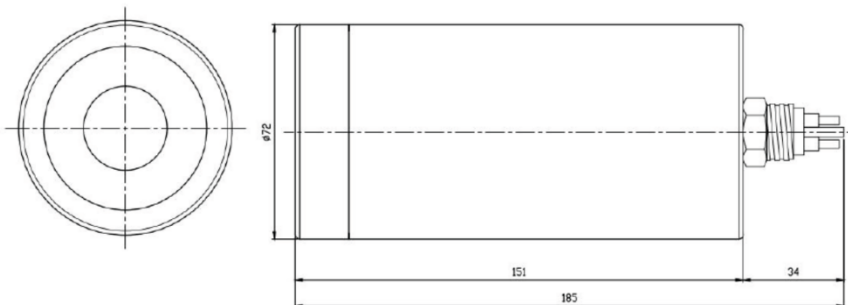




SECURITY SOLUTIONS AND TECHNOLOGIES

Technical Specification Underwater Camera

Models	ENRUW-2F3M (300m) - ENRUW-2F6M (600m) - ENRUW-2F1K (1000m)
	ENRUW-2F2K (2000m) - ENRUW-2F3K (3000m) - ENRUW-2F5K (5000m)
Image sensor	SONY 1/1.8" CCD
Resolution	2 Megapixel
Sensitivity	0.00001Lux@F1.4 (Color mode); 0.00001Lux@F1.2 (Monochrome)
SIGNAL-NOISE RATIO	≥50dB (AGC OFF)
Video compression	H.264 Main Profile / M-JPEG
Voltage	12VDC or 48VDC
Network protocol	TCP/IP, HTTP NTP, IGMP, DHCP, UDPSMTP, RTP, RTSP, ARP, DDNS, DNS, HTTPS, P2P
Internal light	6PCS*1Watt (Optional without internal led light)
Lens	3.6mm (Optional 3.2mm/ 6mm/ 8mm)
Connector	MCBH2MSS
Depth rating	300m, 600m, 1000m, 2000m and 3000m (Optional MAX 5000m)
Storage temperature	-30-60°C
Operating temperature	-20-50°C
Operating humidity	Relative Humidity Below 90%
Standard housing	SS316L (Optional: Titanium or Aluminum)
Window	Acrylic 300m to 1000m (Optional Sapphire for 1000m up to 5000m)
Dimensions	72mm(D)x151mm(L) Excluding Connector
Weight in the air	1.5 KG





Powerful Solutions

EagleVision CCTV



Spotlight e Acessórios Opcionais



EEUW-SL50

Luzes led subaquáticas de alta qualidade 6000-7000LM de cor quente

Baixo consumo de energia, alto brilho, selos importados, longa vida útil,

Excelente desempenho de trabalho em águas profundas de até 1000m

Lâmpadas American COB

Wick type	American Puri fifth generation COB lamp beads
Luminous way	Condenser 75-85 °; astigmatism $\geq 150^\circ$
Luminous flux	6000-7000LM
Color temperature	2200-8000K
Colour	Warm white
Waterproof level	0-100 m (out of range can be customized)
Shell material	Stainless Steel 316L
Power Supply	12-36V
Working environment	Operating temperature $-10^\circ\text{C} \sim +50^\circ\text{C}$



Conectores



Avenida do Batel, 1230 • 5º andar
Batel • Curitiba • PR • 80420-090
Tel: (041) 3342 1600 • vendas@eaglevision.com.br
www.eaglevision.com.br

