



Powerful Solutions

# EagleVision CCTV

## SECURITY SOLUTIONS AND TECHNOLOGIES

### Câmeras Anti-Explosão Aço Inox 304/316L IP ou Analógica - IR 100m - IP68

As Câmeras Anti-Explosão EagleVision foram desenvolvidos e produzidos em aço inox 316L ou 304 com o padrão Internacional anti-explosão Exd II BT6, e possuem proteção anti-corrosão marítima e ácidos corrosivos. Os modelos com aço 304 podem ser utilizado em locais onde contenham gases e ácidos corrosivos; e os modelos 316L em ambientes marítimos tais como: Plataformas off-shore, navios, beira-mar.

Integrada com Sensor HD-CVI/TVI/AHD de 2MP e 3MP ou IP de 2MP à 4K com Lentes Fixa, Varifocal ou Motorizada; e com grau de proteção IP68 para uso externo. Possui iluminador infra-vermelho com alcance de até 50 à 100m, e vidro frontal com fabricação especial Nanotechnology evita acúmulo de água, sujeira ou óleo.

#### DESCRIÇÃO BÁSICA

- Construído em aço inox 316L e Aço 304
- Aplicação em Áreas Classificadas Zona 1 e 2
- Proteção contra interperes padrão IP68
- Câmera Com Infra-Vermelho (Alcance de até 100m)
- Opcionais: Limpador, aquecedor/ventilador e bomba d'água



Suportes Aço Inox Anti-Explosão  
EE-SP316EX (Aço Inox 316L)  
EE-SP304EX (Aço Inox 304)  
Opcionais



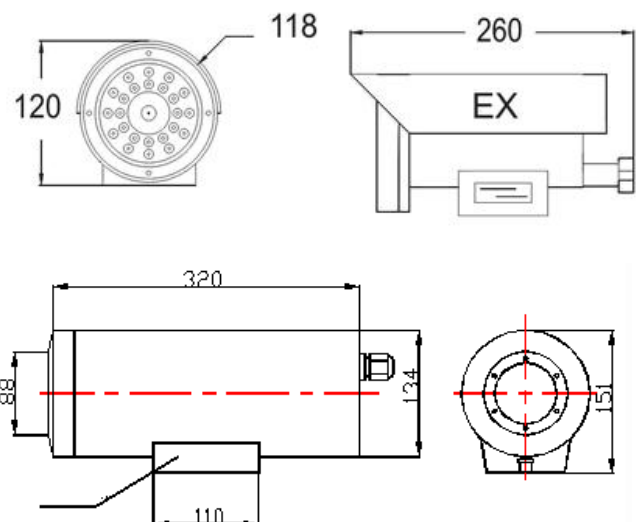
Limpador Frontal e Protetor Solar  
Opcionais



Série Com lente Fixa



Série Com lente  
Varifocal ou Motorizada





## Especificação Técnica - Série IP

Camera		
Image Sensor	1/2.8" 2MP, 4MP, 5MP, 4K Super LowLight Sony Starvis Sensor WDR (120dB)	
Effective Pixels	2MP: 1920(H)x1080(V) / 4MP: 2688(H)x1520p(V)	
Scanning System	Progressive scan	
Electronic Shutter Speed	Auto/Manual,1/3-4~1/100.000s	
Min. Illumination (StarLight)	0.005LUX/F1.2 (Color), 0.001LUX/F1.2(B/W), 0.0LUX (IR ON)	
S/N Ratio	>50dB	
Camera Features		
Day/Night	Auto(ICR)/Color/B/W	
IR LEDs (Optional)	50m or 100m (4x Intelligent LEDs)	
Backlight Compensation	BLC (Adjustable), HLC, WDR 120dB (Super Wide Dynamic Range) adjustable	
AWB / AGC / EIS	Indoor, Outdoor, Auto / Manual / EIS (Electronic Image Stabilizer)	
ROI (Region Of Interest)	Support. Provide area configuration to speed transmission on selected area	
Noise Reduction	3D (0~100 levels)	
Privacy Masking	Up to 4 areas	
Motion Detection	Up to 4 areas	
Other Functions	Brightness, Contrast, Color, Sharpness, Mirror/Flip 180°, Digital Zoom 16X, NAS Storage	
Intelligent Video Analysis	Face detection, Virtual Fence, Intrusion, Direction, Scene change, Missing/Abandoned detection	
Lens		
Lens Type	Fixed: 2.8/4/6mm (FOV: 110°/83°/62°) - Motorized: 2.7-13.5mm (4X), 20X or 30X, Auto-Focus, Auto-Iris F1.4 - Varifocal: 2.8-12mm DC Auto-Iris	
Video		
Compression	H.265/H.264h,m,b/MJPEG	
Resolution	4K / 5MP / 4MP / 2MP / 720P(1280x720) / D1(704x480) / CIF(352x240)	
Frame Rate	Main Stream	4K (20fps) / 5MP, 4MP, 1920x1080p, 1280x720p (1 ~ 25fps PAL/30fps NTSC)
	Sub Stream	D1/CIF(1 ~ 25fps PAL/30fps NTSC)
	Third-Stream	1920x1080p, 720p, D1, CIF (1 ~ 25/30fps NTSC)
Bit Rate	H.264/H.265: 32K ~ 8,0Mbs, MJPEG: 32K ~ 12288Kbps	
Audio		
Compression	G.711a / G.711u(64kbps)/PCM(128kbps)	
Interface	1/1 channel In/Out	
Network		
Ethernet	RJ-45 (10/100/1000Base-T)	
Protocol	IPv4/IPv6, HTTP, HTTPS, SSL, TLS, TCP/IP, UDP, UPnP, ICMP, IGMP, SNMP, ARP, RTSP, RTP, SMTP, NTP, DHCP, DNS, PPPOE, DDNS, FTP, 802.1x, QoS, Bonjour, SIP, IP Filter, P2P	
ONVIF / PSIA / CGI	ONVIF Ver. 2.4 / Support / Support	
Max. User Access / Interface	20 users / Web browser interface for remote configuration, firmware update, camera register, log, setup	
Smart Phone / Browser	iPhone, iPad, Android, Windows Phone / IE 6.0 or higher, Firefox, Chrome	
Auxiliary Interface		
Memory Slot	MicroSD, Max 128GB	
Alarm	2/1 channel In/Out	
General		
Power Supply	DC12V, PoE(802.3at)	
Power Consumption	<10W / 50W (IR ON)	
Weather and Impact Proof	IP67 water proof (Heater anti-condensation optional) / IK08 Impact proof	
Working Environment	-10°C~+60°C, 10%~90%	



## Especificação Técnica - Série Analógica

Models / Housing		Series With IR	Series Without IR
Certification Parameter	Manufacturers Standard	GB3836-2000, GB12476.1-2000	
	Configuration Mode	Integrated configuration without external connection; fixed cable entries	
	Ex-proof mark	ExdII BT6 / DIP A20 TA, T6	
	IP Standard	IP68	
	Operating environment	Below IIC gas group (hydrogen, acetylene, ethene, cook-oven gas, methyl ether etc.) flammable dust, oil and saline environment	
	Operating temperature (°C)	(-)25~(+)60 (Fan and heater optional)	
	Cable entries	Back side: 2X G1/2" , Dia. Of inner hole φ12	
Mechanical Features	Material	Stainless steel 316Lor 304	
	Wiper	Optional	Optional
	Glass Visor Size	Φ75	Φ65
	External Dimension	260×120×118mm	389×163×169(M) / 365×163×169(S)
	Internal Dimension	Φ101×250mm	Φ115×290 mm
	Weight	7Kg	8Kg
Infra-red Light	IR Type	850nm	Optional
	Controlling Device	Auto (ICR)	Optional
	Range	Up to 100 meters	Optional
Power	Input Voltage (V)	12VDC (24VAC Optional)	
Others	Pump/tank washer system	Optional	
	Sunshield	Optional	
	Wiper	Optional	
	Heater	Optional	
	Power module	Optional	
	Cable Requirement	Power supply: 2x1.0 mm <sup>2</sup> (24V DC) / 2x0.75 mm <sup>2</sup> (220V AC) Communication: Shield 2x0.3 mm <sup>2</sup> Video: 75Ω	

Analog Series Camera	Description
Signal system	PAL or NTSC System 1.0 Vp-p,75 Ohm
Image sensor	1/3" Sony Super-HAD Color CCD
DSP	Sony Effio-D
Active pixel	960(H)x494(V)(NTSC) / 960(H)x506(V)(PAL)
Horizontal Resolution	700 TV Lines (Color) / 720TV Lines(B/W)
Min scene illumination	0.1Lux(color) f/1.2 40 IRE,0.01Lux(B/W) / 0.001Lux(Low-shutter mode)
S/N ratio	52dB(AGC OFF)
Lens Zoom Length	Manual 3.9mm~117mm (30X) with Spot Filter (20X Optional)
Iris	DC Automatic F1.2~F3.2
Focus	Manual/Automatic
Minimum Object Distance / Angle	0.2m / 3.1° ~ 50.7° (H), 2.3° ~ 37.5° (V)
Synchronization	Internal
Exposure control	WDR (Wide Dynamic Range), Auto, Manual, IRIS, Shutter , AGC on/off , BLC on/off
OSD Function	Digital zoom, AWB, B/W, Mirror, DNR, BLC, Title, Camera ID, Motion detection, etc
Communication	RS485 integrated (Protocol PelcoD/P, EagleVision, others)
Power Requirement/Consumption	DC12V (AC24V Optional) ±10%(4.0W Max) 50/60 Hz ±10%
Tolerance Temperature / Humidity	(-)10°C to (+)55°C / 0%~95%





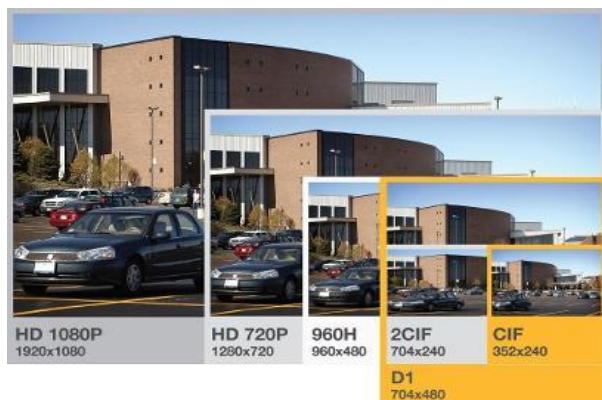
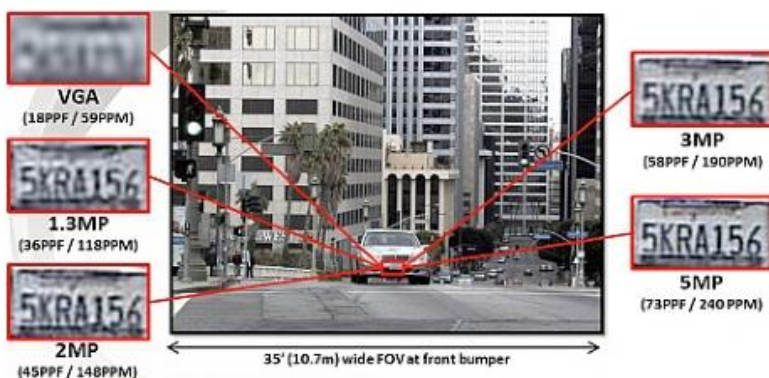
Powerful Solutions

# EagleVision CCTV



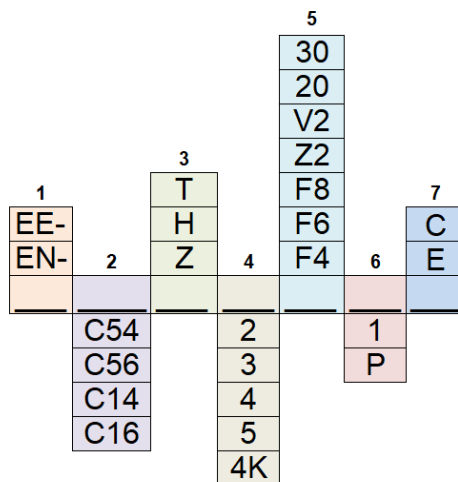
SECURITY SOLUTIONS AND TECHNOLOGIES

Alta Resolução de Imagem HD



## Modelos Opcionais

- EE = EagleVision Série Analógica; EN = EagleVision Série IP
- C54 = Aço Inox 304 com IR50m; C56 = Aço Inox 316L com IR 50m  
C14 = Aço Inox 304 IR100m; C16 = Aço Inox 316L com IR 100m
- T = Série T; H = Série H; Z = Série Z
- 2 = 2.0Mega-Pixel; 3 = 3MP; 4 = 4MP; 5 = 5MP; 4K = 4K
- F4 = Lente Fixa 4.0mm; F6 = 6.0mm; F8 = 8.0mm; Z2 = 2.7-13.5mm motorizada  
V2 = 2.8-12mm varifocal; 20 = 20X motorizada; 30 = 30X motorizada
- 1 = Voltagem 12VDC; P = Voltagem POE IEEE802.3af/12VDC
- E = Anti-Explosão/Corrosão; C = Anti-Corrosão



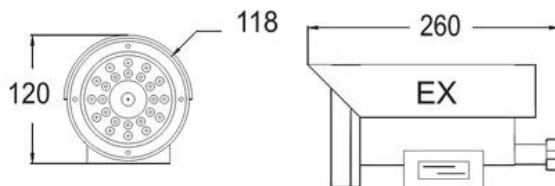
## Certificates Explosion-Proof

### Standards:

- IEC60079-0:2004 - Electrical apparatus for explosive gas atmospheres – Part 0: General requirements
- IEC60079-1:2003 - Electrical apparatus for explosive gas atmospheres – Part 1: Flameproof enclosure “d”
- GB3836.1-2000 - Electrical apparatus for explosive gas atmospheres – Part 0: General requirements
- GB3836.2-2000 - Electrical apparatus for explosive gas atmospheres – Part 1: Flameproof enclosure “d”
- Q/LDX001-2007 - Enterprise standards for electrical apparatus for explosive gas atmospheres
- EN50014 ff - Electrical apparatus for explosive gas atmospheres (Europe Union)

### Marking: Exd II CT6

(C15888, C15889, C15890) Exd II CT6.  
Approved by CNEEx/CQST Class I Division 1, Groups B, C, and D.  
Certified by EC-TYPE EXAMINATION, KEMA 04ATEX2045X, II 2G EExd II CT6, II2D T180 degree centigrade.



Avenida do Batel, 1230 • 5° andar  
Batel • Curitiba • PR • 80420-090  
Tel: (041) 3342 1600 • vendas@eaglevision.com.br  
www.eaglevision.com.br

